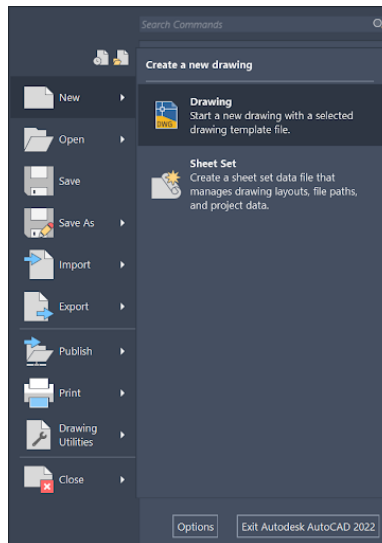


Instructions:

1. Setting Up The AutoCAD File

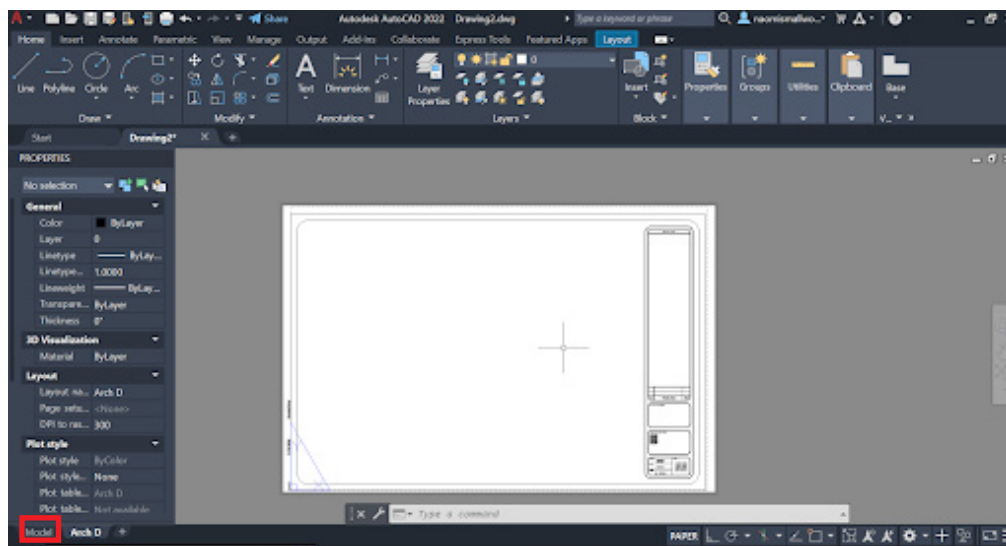
a. Open CAD

- i. New File -> Drawing -> Sheet Sets -> Architectural Imperial



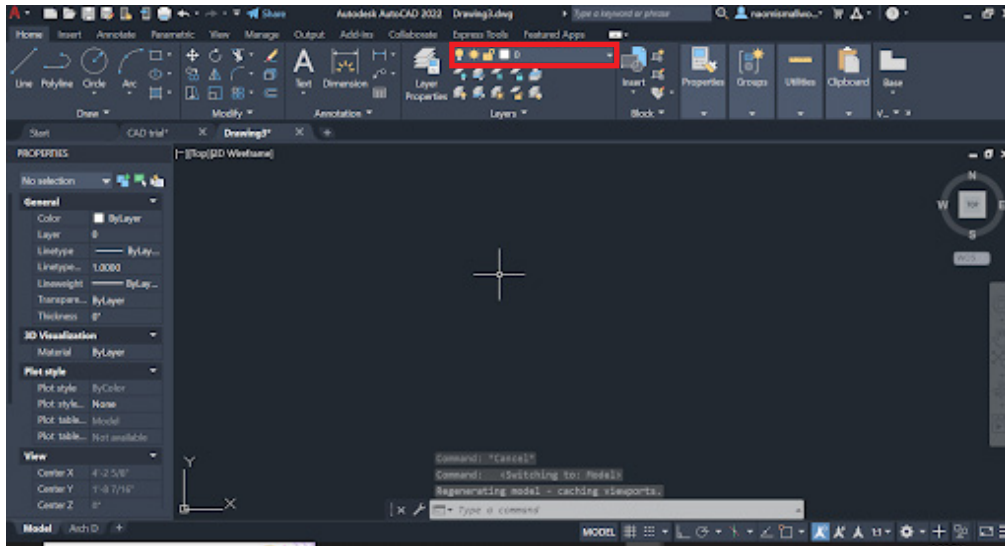
b. You should see a white title block sheet

- i. Switch over to model space

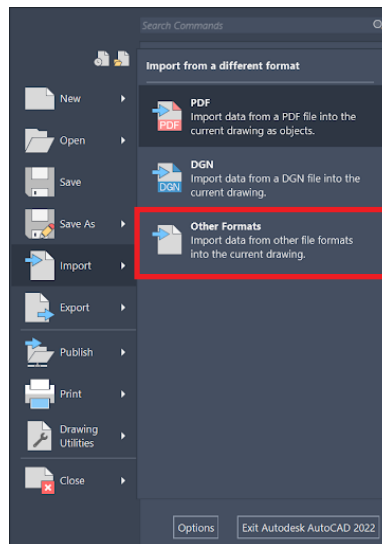


b. Import Your Drawing

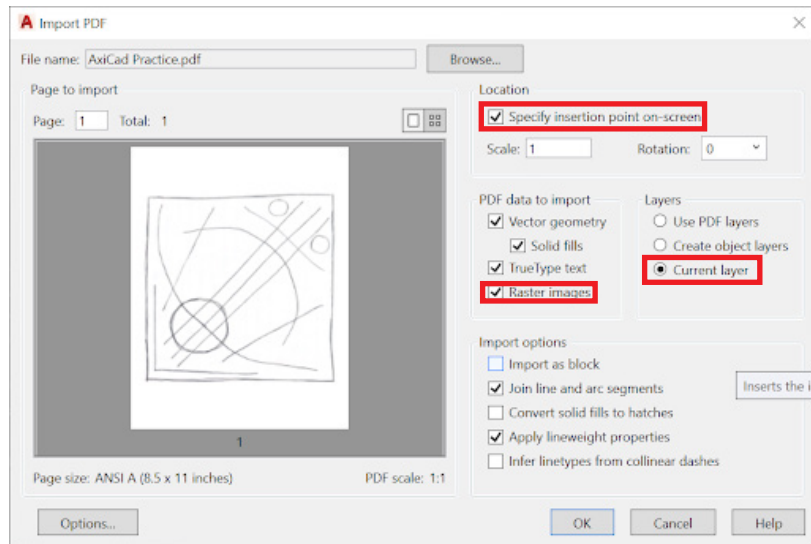
i. Make sure you are currently on layer "0"



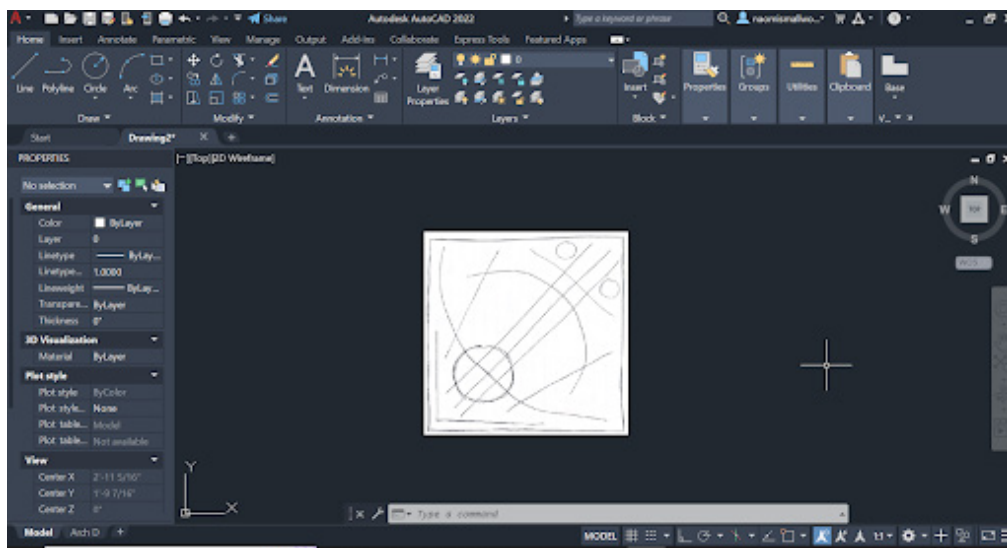
ii. Import -> Other format -> Locate your file -> Open



1. Select “Specify Insertion Point”, “Raster Images”, and “Current Layer”
2. Click Ok



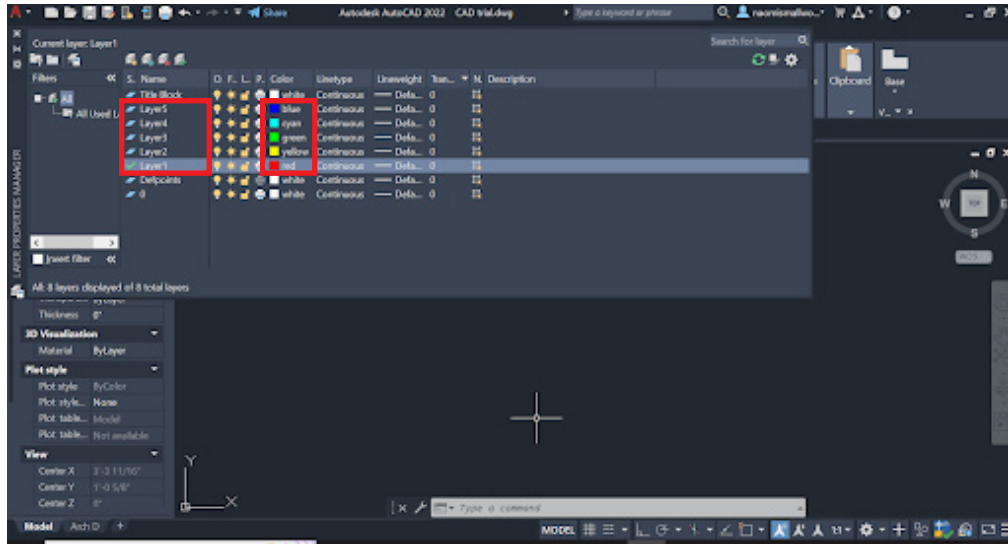
3. Tap where on the screen you want to image to appear
 - a. Don't worry about scale right now you can fix it in Inkscape



c. Tracing You Drawing

i. Open Layer Properties

1. Add a couple more layers (one for each color and/or line weight you are using)
 - a. Name the layers 1-x so it is easier to keep track of them
 - b. Give each layer it's own color (you pick it doesn't matter) so that you can tell them apart

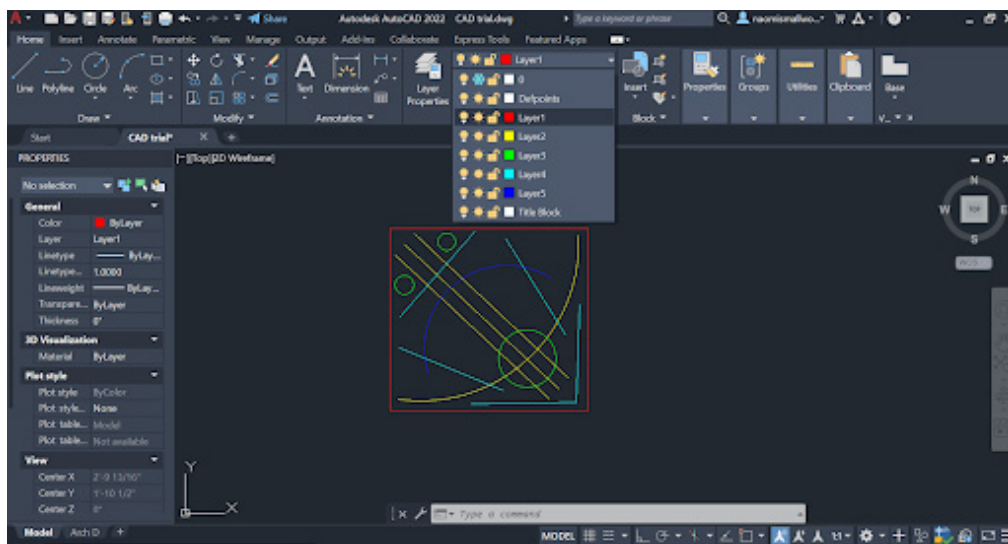


c. Using all of the tools AutoCAD provides trace over your drawing

2. Make sure each color/line type you want for the final is on a separate layer
 - a. Note: The example drawing was flipped during the tracing yours can stay facing the same way

ii. When you are done tracing freeze layer 0 so your original sketch is hidden

1. Go through and freeze and unfreeze your other layers to make sure all of the lines are where they are supposed to be



d. Plotting a PDF

i. Click on the plotter (printer) on the top of the screen

1. Set the printer to “Adobe PDF”

2. The Size to “Letter”

3. What to Plot to “Window”

a. It should navigate you back to your drawing

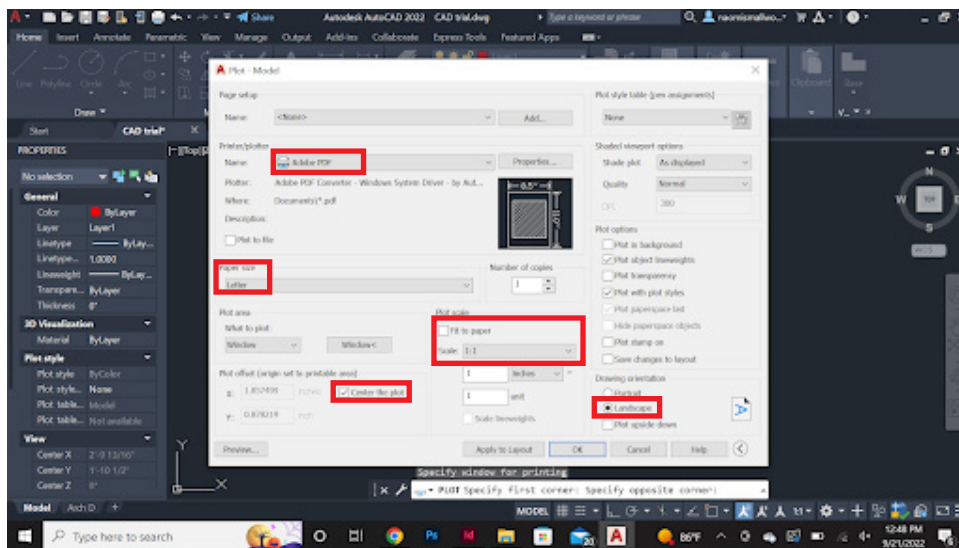
b. Tap once a little outside the upper left corner and twice a little outside the lower right corner to select all of your drawing

4. Click “Center the Plot”

5. Unclick “Fit to Paper”

6. Set scale to “1:1”

7. Set orientation to “Landscape”



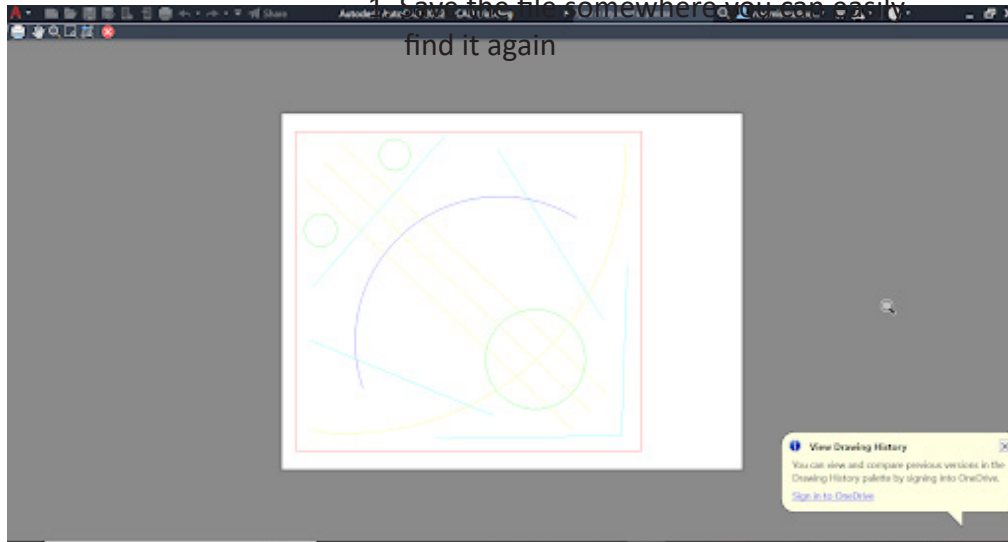
ii. To check that the pdf is set up properly click preview

1. It should look something like this

a. If you are happy with it press escape

iii. When the plotting screen reappears click ok

1. Save the file somewhere you can easily find it again



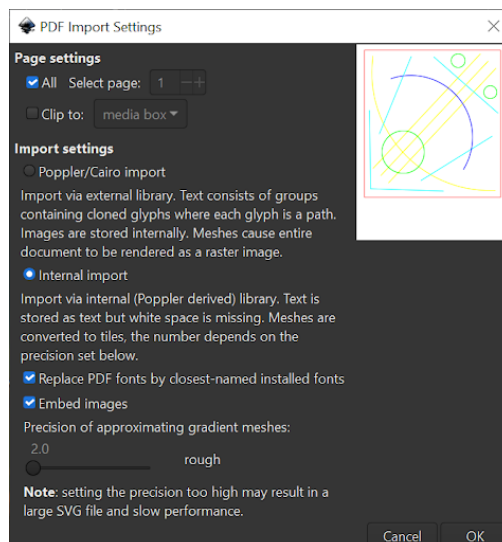
1. Switching over to Inkscape

a. Once you download inkscape open the program

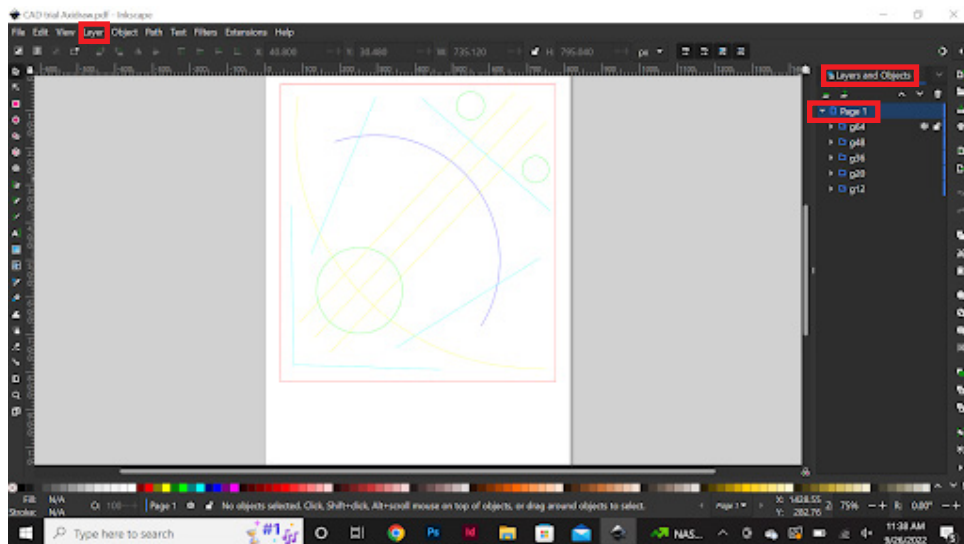
i. Load File -> Find and Select your PDF

1. A secondary screen should pop up with your file in the upper right corner

a. Check the settings are the same as the image below and press ok

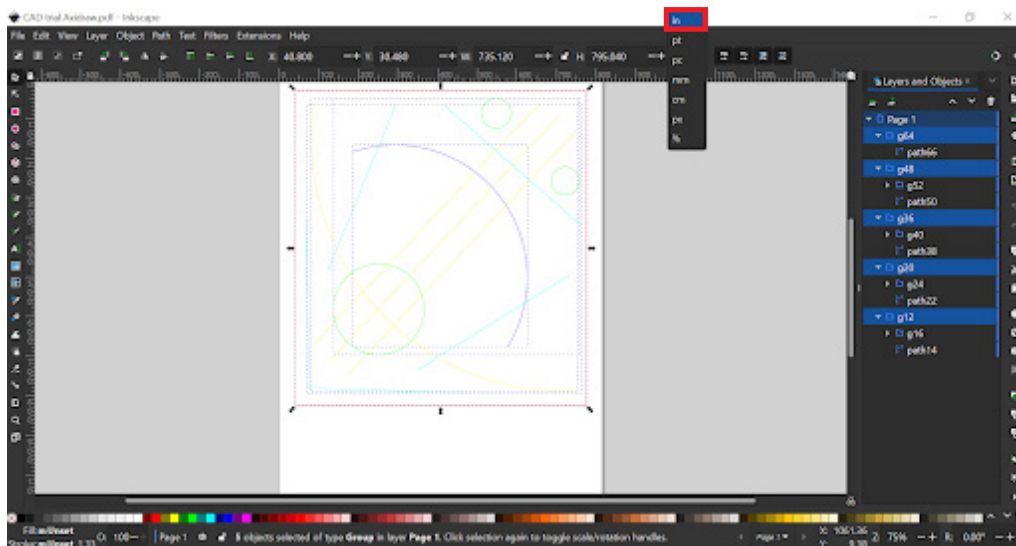


2. Your file should be visible in the center of the screen
 3. Use the “-” and “+” buttons to zoom in and out
- ii. Select Layer -> Layers and Objects
1. The layers tab should be visible on the right side of the screen
 - a. Open the “Page 1” using the arrow to its left
 2. You should see the same number of layers as you made in AutoCAD (though they will likely have different names)
 - c. Using the eyes to the left of each layer hide and unhide each layer to make sure all of your components are there and on the proper layer

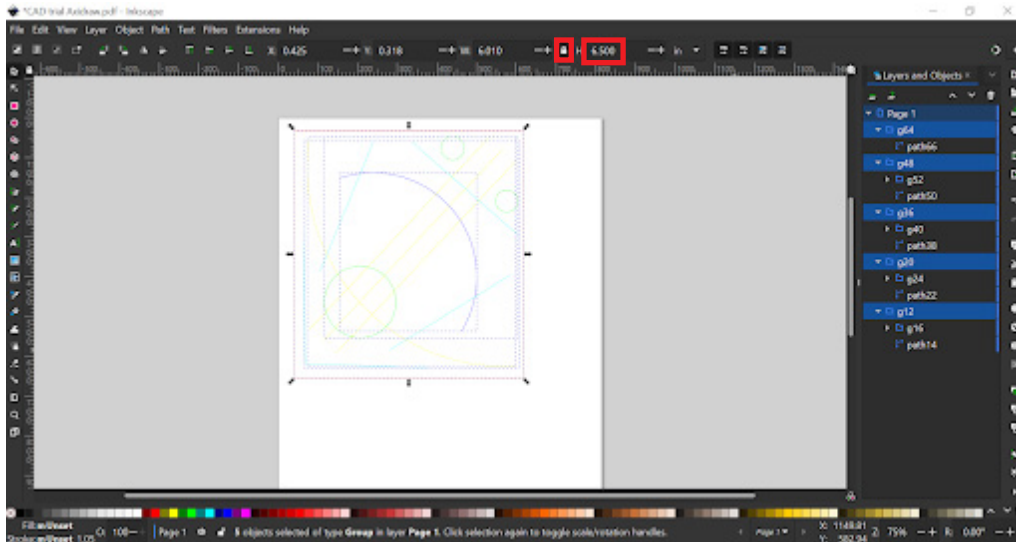


b. Sizing your drawing

- i. Highlight all of your lines to select the entire image
- ii. Go up to the size unit and scroll until you get to inches



- iii. Select the lock button to keep the proportion of your drawing the same
- iv. Pick either the height or width and type in 6.5 and press enter to resize your image
 - 1. You should see the drawing size change to match the new settings



2. Checking the Document

- a. If all of your layers off to the side have opened up close them using the arrow to the right of their name
 - i. Leave the “Page 1” layer open so you can see all of the base layers your lines are on
- b. Use the eye tools on the left hand side of each layer to check again that everything is there and they are working properly
- c. If everything looks correct you are ready to safe the document on a flash drive take it to the Axidraw machine

